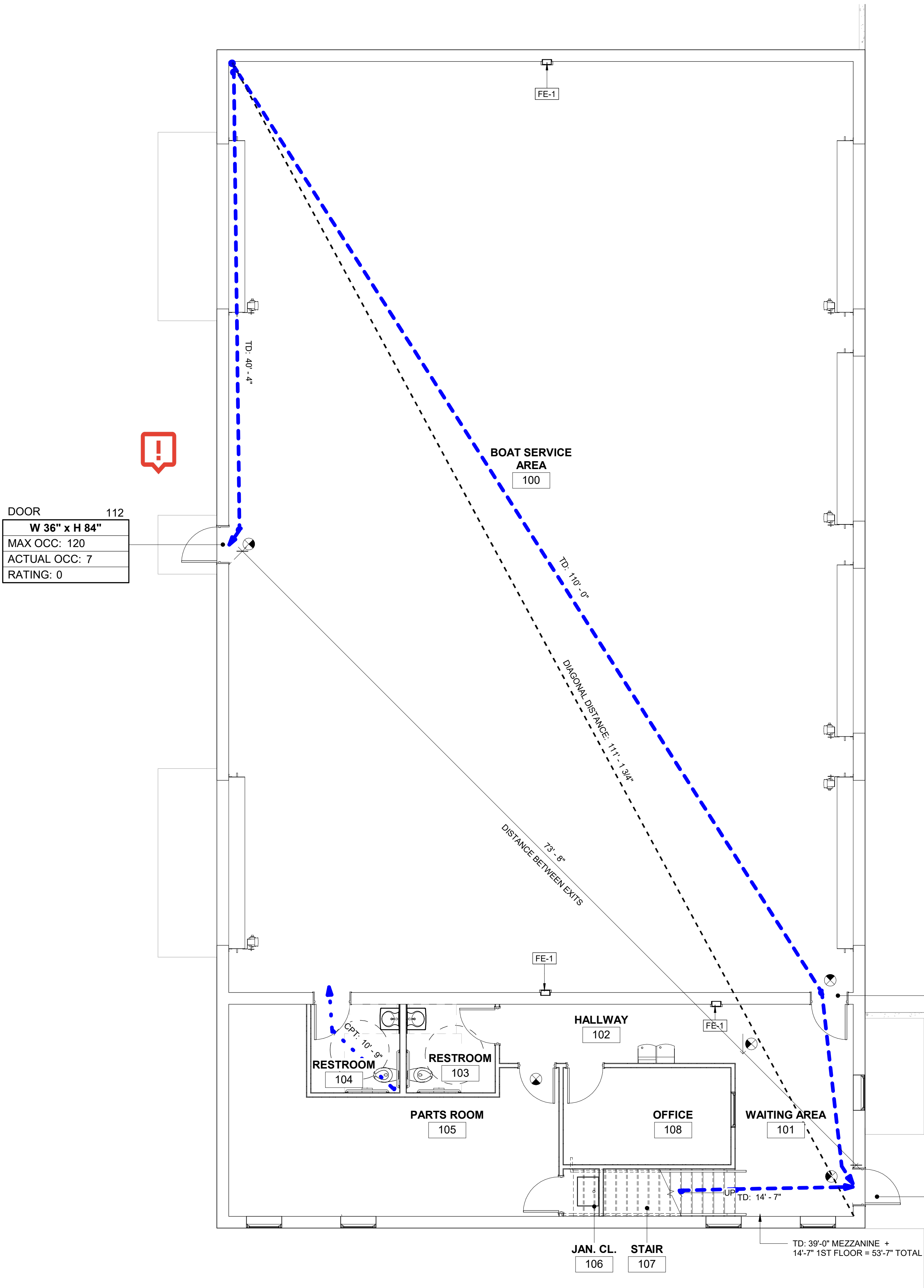


Autodesk Doc/Hodge Marine/24-057/Hodge Marine_205.rvt
7/1/2025 9:48:43 AM



LIFE SAFETY PLAN NOTES

- EVERY ROOM OR SPACE THAT IS AN ASSEMBLY OCCUPANCY SHALL HAVE THE OCCUPANT LOAD OF THE ROOM OR SPACE POSTED IN A CONSPICUOUS PLACE, NEAR THE MAIN EXIT OR EXIT ACCESS DOORWAY FROM THE ROOM OR SPACE. POSTED SIGNS SHALL BE OF AN APPROVED LEGIBLE PERMANENT DESIGN AND SHALL BE MAINTAINED BY THE OWNER.
- SEE ELECTRICAL DRAWINGS FOR LOCATIONS OF EMERGENCY LIGHTING.

LIFE SAFETY LEGEND

- [FE-X] FIRE EXTINGUISHER - SEE FIRE EXTINGUISHER SCHEDULE
- [Red Arrow] FIRE RATED DOOR
- [Blue Dashed Line] TD: XXX' TRAVEL DISTANCE (TD)
- [Blue Dotted Line] CPT: XXX' COMMON PATH OF TRAVEL (CPT)
- [Dashed Line] SEPARATION DISTANCE: XXX' SEPARATION DISTANCE
- [Dashed Line] DIAGONAL DISTANCE: XXX' DIAGONAL DISTANCE
- [Patterned Bar] 1 HR FIRE RATED
- [Patterned Bar] 2 HR FIRE RATED
- [Patterned Bar] 3 HR FIRE RATED
- [Patterned Bar] 4 HR FIRE RATED

LIFE SAFETY TAG LEGEND

- STAIR TAG**
- 02 STAIR NUMBER
- FOR EGRESS
- STAIR RUN WIDTH
- MAX OCCUPANT LOAD
- ACTUAL OCCUPANT LOAD
- 20 RISERS @ 7 3/4" STAIR RISER AND TREAD COUNT
- 19 TREADS @ 10 3/4"
- EGRESS DOOR TAG**
- 101 DOOR NUMBER
- DOOR DIMENSIONS
- MAX OCCUPANT LOAD
- ACTUAL OCCUPANT LOAD
- DOOR FIRE RATING

1 FIRST FLOOR - LIFE SAFETY PLAN
3/16" = 1'-0"

DRC **PLAN APPROVAL**

PROJECT NUMBER: 24-057

DATE ISSUED: 2025-06-30

SHEET TITLE: LIFE SAFETY PLAN - FIRST FLOOR

SHEET NO.: A101

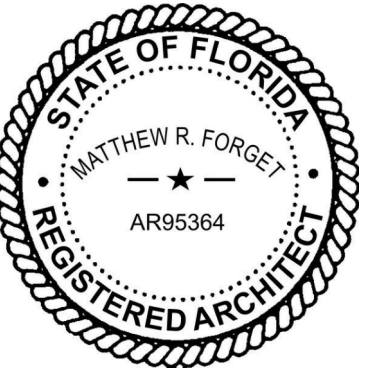
PZ25-1200034

08/06/2025



S ARCHITECTURE
33 SE 4TH STREET, SUITE 100
BOCA RATON, FL 33432
561.835.5515
WWW.SARCHITECTURE.COM
AA26003746

SEAL:



MATTHEW R. FORGET // REG. FL. NO. AR95364

DIGITAL SIGNATURE:

CLIENT / PROJECT ADDRESS:

HODGE MARINE

1857 NW 21ST STREET
POMPANO BEACH, FLORIDA 33069

REVISIONS:

NO.	DATE	DESCRIPTION
-----	------	-------------

KEY PLAN: